

2" INGROUND
2071

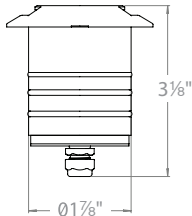
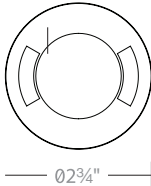
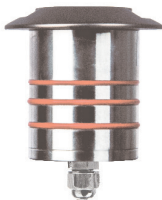
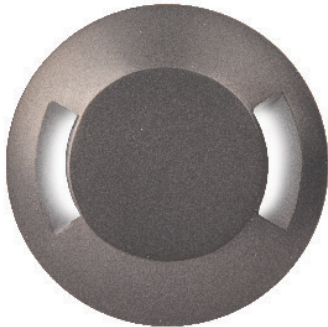
WAC
LANDSCAPE LIGHTING

Fixture Type:

Catalog Number:

Project:

Location:



PRODUCT DESCRIPTION

Landscape 2" recessed in-ground luminaire washes walkways with a shadow-free smooth illumination.

FEATURES

- Factory sealed water tight fixtures
- Cold Weather Start: -40°C to 50°C
- Solid stainless steel construction
- Available Concrete Pour Adapter
- Spring clip, 6' lead wire and direct burial gel filled wire nuts included

SPECIFICATIONS

Input: 9 - 15VAC (Transformer is required)
Power: 4.1W / 6.6VA (Use VA value for sizing the transformer and calculate voltage drop.)
Brightness: 3.5 lm
CRI: 85
Rated Life: 70,000 hours

ORDERING NUMBER

	Color Temp		Finish	
2071	27	2700K	BS	Bronzed Stainless Steel
	30	3000K	SS	Stainless Steel

IEC safety Standard	Walk over	Drive over
	Resistance to static load test	Yes (1125lbs) Yes (4496lbs)
	Resistance to torque and shear loads test	N/A Yes

2071-30_____

Example: 2071-30SS

2" INGROUND
2071

WAC
LANDSCAPE LIGHTING

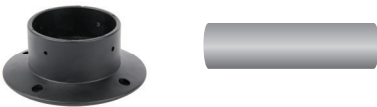
Magnetic Transformers



Stainless Steel, 12-15V output,
IP65 rated, UL 1838 listed
See transformer spec sheet for
details and its accessories

- 9075-TRN-SS
75W Max
- 9150-TRN-SS
150W Max
- 9300-TRN-SS
300W Max
- 9600-TRN-SS
600W Max

2" Concrete Pour Kit



For installation in concrete.
Use with a 4" outdoor rated junction box
and a trade size 2" schedule 80 PVC pipe

2000-CON-PVC

TESTED MAGNETIC LOW VOLTAGE (MLV) DIMMERS

Luminaire	Dimmer					
	Manufacturer	Family	Model	Power Rating	Range*	Note
2071	Lutron	Diva	DVLV-600	600W	20% - 100%	
		Skylark	SLV-600P	600W	15% - 100%	Best performance
		Skylark	S-10P	1000W		Not recommended

*Low end of this range is determined by output current which may not directly translate to the perceived light output

WAC Lighting fixtures are compatible with a variety of dimmers. For your convenience we have included a compatibility chart showing dimmers which have been tested with our products. The recommended list below is based upon testing conducted in a lab, and the results can vary in certain field applications due to a number of factors. Exclusion from the list does not imply incompatibility, just that it has not been tested by WAC Lighting. Please reference the dimmer manufacturer's instructions for installation, or contact a WAC lighting professional at 800-526-2588.