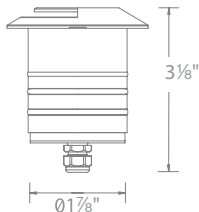
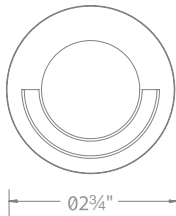
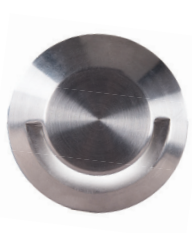


# 2" INGROUND SINGLE APERTURE

## 2091

# WAC

## LANDSCAPE LIGHTING



Fixture Type:

Catalog Number:

Project:

Location:

### PRODUCT DESCRIPTION

Landscape 2" recessed in-ground luminaire washes walkways with a shadow-free smooth illumination.

### FEATURES

- Factory sealed water tight fixtures
- Cold Weather Start: -40°C to 50°C
- Solid stainless steel construction
- Available Concrete Pour Adapter
- Spring clip, 6' lead wire and direct burial gel filled wire nuts included

### SPECIFICATIONS

- Input:** 9 - 15VAC (Transformer is required)  
**Power:** 4.1W / 6.6VA (Use VA value for sizing the transformer and calculate voltage drop.)  
**Brightness:** 5 lm  
**Color Temp:** 3000K  
**CRI:** 85  
**Rated Life:** 70,000 hours

### ORDERING NUMBER

	Color Temp	Finish
2091	27 2700K	BS Bronzed Stainless Steel
	30 3000K	SS Stainless Steel

IEC safety Standard	Walk over	Drive over
Resistance to static load test	Yes (1125lbs)	Yes (4496lbs)
Resistance to torque and shear loads test	N/A	Yes

2091-30\_\_\_\_\_

Example: 2091-30SS

# 2" INGROUND SINGLE APERTURE

2091

## WAC LANDSCAPE LIGHTING

### Magnetic Transformers



*Stainless Steel, 12-15V output,  
IP65 rated, UL 1838 listed  
See transformer spec sheet for  
details and its accessories*

**9075-TRN-SS**  
75W Max

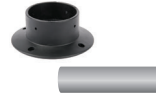
**9150-TRN-SS**  
150W Max

**9300-TRN-SS**  
300W Max

**9600-TRN-SS**  
600W Max

### 2" Concrete Pour Kit

*Order complete kit*



**2000-CON-PVC**  
Concrete Pour Kit

*Order components separately*



**2000-PC-B**  
Concrete Pour Base



**2000-PVC-P**  
Concrete Pour Pipe  
Schedule 40 PVC

*For installation in concrete.  
Use with a 4" outdoor rated junction box*

### TESTED MAGNETIC LOW VOLTAGE (MLV) DIMMERS

Luminaire	Dimmer					
	Manufacturer	Family	Model	Power Rating	Range*	Note
<b>2091</b>	Lutron	Diva	DVLV-600	600W	20% - 100%	
		Skylark	SLV-600P	600W	15% - 100%	Best performance
		Skylark	S-10P	1000W		Not recommended

\*Low end of this range is determined by output current which may not directly translate to the perceived light output

WAC Lighting fixtures are compatible with a variety of dimmers. For your convenience we have included a compatibility chart showing dimmers which have been tested with our products. The recommended list below is based upon testing conducted in a lab, and the results can vary in certain field applications due to a number of factors. Exclusion from the list does not imply incompatibility, just that it has not been tested by WAC Lighting. Please reference the dimmer manufacturer's instructions for installation, or contact a WAC lighting professional at 800-526-2588.

wacighting.com  
Phone (800) 526.2588  
Fax (800) 526.2585

**Headquarters, East Manufacturing Facility**  
44 Harbor Park Drive  
Port Washington, NY 11050

**South East Manufacturing Facility**  
1600 Distribution Ct  
Lithia Springs, GA 30122

**Central Manufacturing Facility**  
1700 South J Elmer Freeway, Ste 100  
Cedar Hill, TX 75104

**West Manufacturing Facility**  
1750 S Archibald Ave  
Ontario, CA 91761